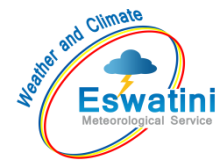


AGROMETEOROLOGICAL BULLETIN

Doc No: TEA 3/3/7/2 F-004
Revision No: 1
Effective Date: 01.07.2017
Page No: 1 of 5
Approved by:



REPORTING PERIOD:
21 – 30 NOVEMBER 2024



ISSUE No.: 06

SEASON: 2024/25

RELEASED: 04/12/2024

CONTENTS

CONTENTS	1
HIGHLIGHTS	1
RAINFALL AND TEMPERATURES	2
RAINFALL	2
TEMPERATURES	3
MAIZE AND OTHER CROPS.....	3
CURRENT FARMING ACTIVITY	3
OTHER CROPS	3
MAIZE CROP STAGE AND CONDITION ..	3
LIVESTOCK AND PASTURES	4
WATER SITUATION	4
MEDIUM-TERM OUTLOOK	4
RAINFALL	4
TEMPERATURE.....	4
SOIL MOISTURE	4
WIND SPEED	4

HIGHLIGHTS

- **Below Normal rainfall observed...**
- **Fair vegetation condition...**
- **Few land preparation and planting activities...**
- **Decrease in rainfall is anticipated...**
- **Hot to very hot temperatures forecasted...**
- **Decrease in soil moisture expected...**

AGROMETEOROLOGICAL BULLETIN

Doc No: TEA 3/3/7/2 F-004

Revision No: 1

Effective Date: 01.07.2017

Page No: 2 of 5

Approved by:

RAINFALL AND TEMPERATURES

RAINFALL

Below Normal rainfall continued to be observed in the 3rd dekad of November 2024 (**Figure 1**), in most parts of the country (**Map 1**).

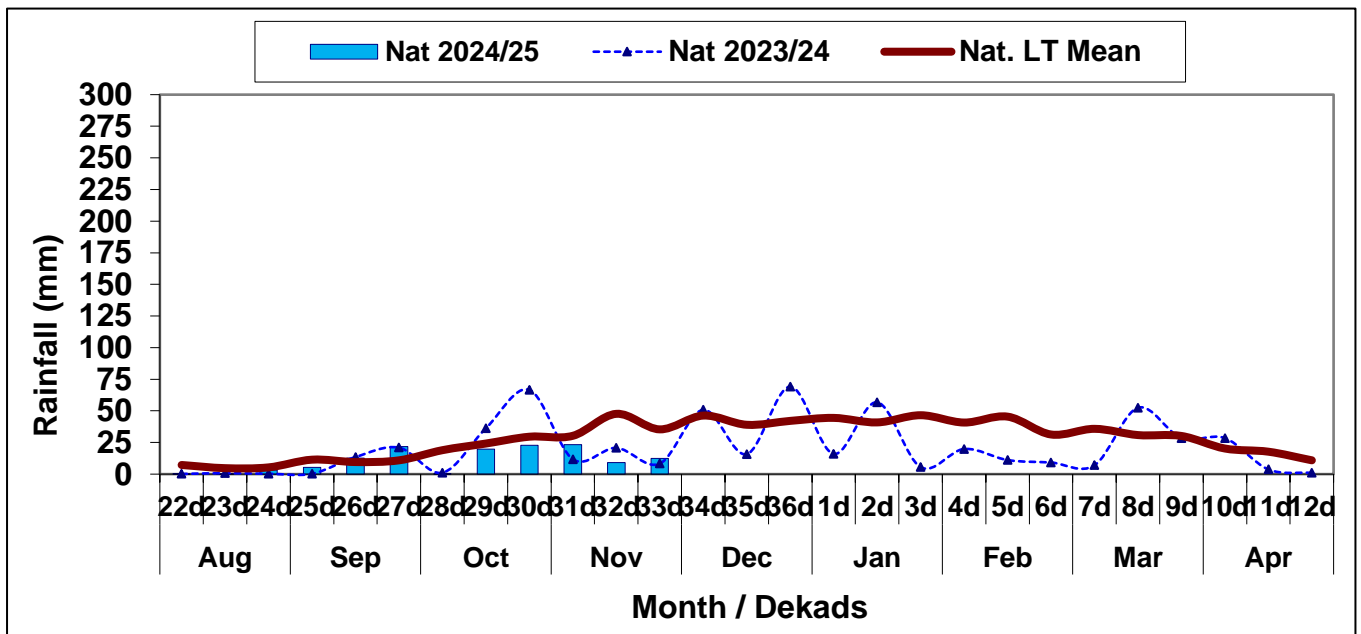
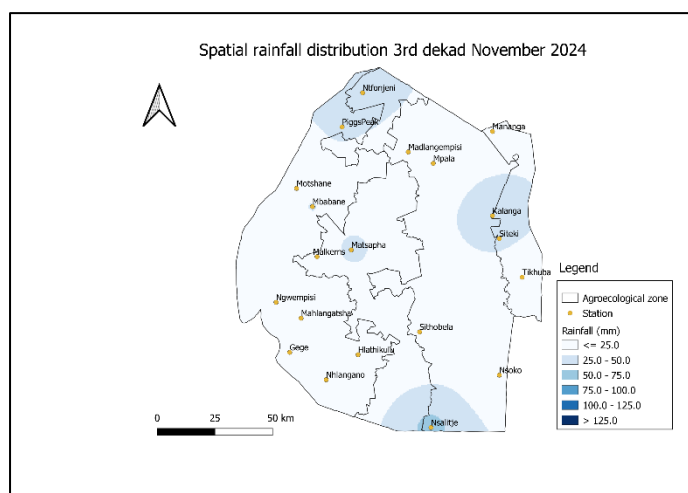
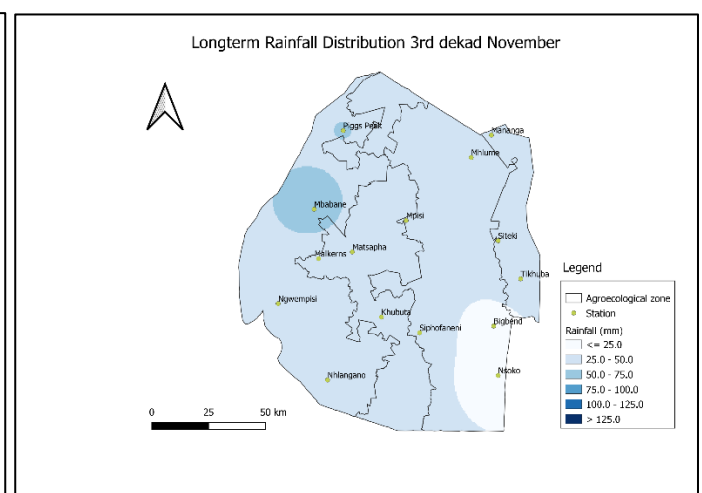


Figure 1: Rainfall distribution 3rd dekad November 2024



Map 1: Spatial rainfall distribution 3rd dekad November 2024



Map 2: Longterm Rainfall Distribution 3rd dekad November

Compiled and Issued by: Agrometeorological Unit,

Swaziland Meteorological Service, Ministry of Tourism and Environmental Affairs.

Box 2652, Mbabane, Swaziland. ☎ (+268) 2404 8859 / 2404 6274. 📠 Fax: 2404 1530

E-mail: dudu@swazimet.gov.sz

AGROMETEOROLOGICAL BULLETIN

Doc No: TEA 3/3/7/2 F-004

Revision No: 1

Effective Date: 01.07.2017

Page No: 3 of 5

Approved by:

The Highveld and Middleveld receive Below Normal rainfall, while the Lowveld and Lubombo plateau received near Normal rainfall (**Table 1**).

Table 1: Rainfall (mm) 3rd dekad November 2024

	HV	MV	LV	LP
2023/24	14	7	5	4
Average	48	38	24	33
2024/25	9	9	18	21
Anomaly	-39	-29	-5	-12

TEMPERATURES

High temperatures continued to persist during the reporting period (**Figure 2**).

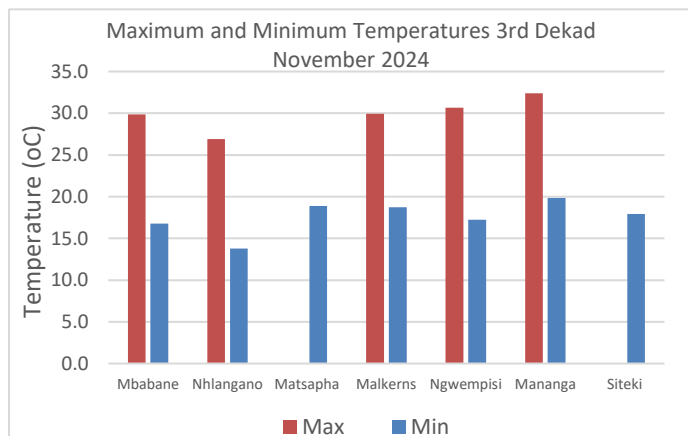


Figure 2: Maximum and Minimum temperatures 3rd dekad of November 2024

MAIZE AND OTHER CROPS

CURRENT FARMING ACTIVITY

Few farmers have commenced land preparation and planting, pending sufficient rainfall

OTHER CROPS

No other crops have been reported to have been planted.

MAIZE CROP STAGE AND CONDITION

Planted maize, mostly in the Highveld and Middleveld is not in good condition due to moisture stress, high temperatures and recent hailstorm.

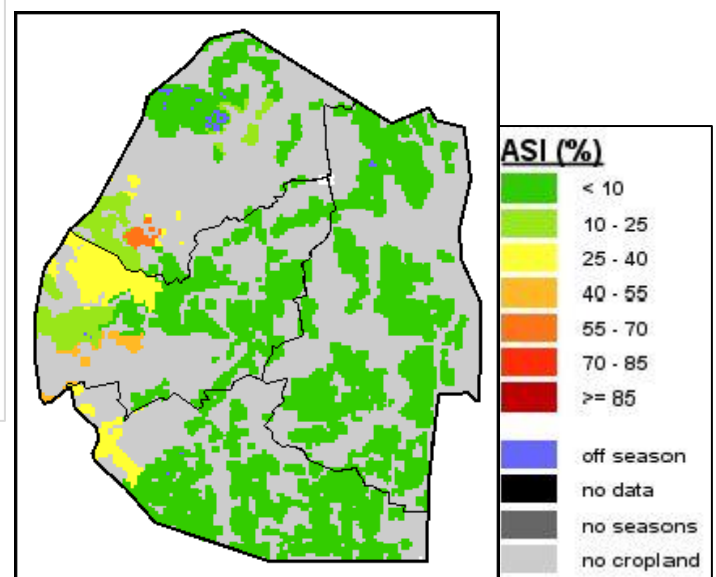


Image 1: Agriculture Stress Index 3rd dekad November 2024

Source: FAO-GIEWS

Compiled and Issued by: Agrometeorological Unit,

Swaziland Meteorological Service, Ministry of Tourism and Environmental Affairs.

Box 2652, Mbabane, Swaziland. ☎ (+268) 2404 8859 / 2404 6274. 📠 Fax: 2404 1530

E-mail: dudu@swazimet.gov.sz

AGROMETEOROLOGICAL BULLETIN

Doc No: TEA 3/3/7/2 F-004

Revision No: 1

Effective Date: 01.07.2017

Page No: 4 of 5

Approved by:

LIVESTOCK AND PASTURES

Livestock is not in good condition as a result of water shortages due to insignificant rainfall and persistent high temperatures.

WATER SITUATION

The water levels in the country are showing a slight decrease as not much rainfall has been received in the past days, coupled with high temperatures.

MEDIUM-TERM OUTLOOK

RAINFALL

Decrease in rainfall is expected in the outlook period.

TEMPERATURE

Hot to very hot temperatures are anticipated in the outlook period.

SOIL MOISTURE

A decrease in soil moisture is expected in the outlook period.

WIND SPEED

Wind will generally be light to moderate in the outlook period

NB: Outlook period is ten days from date of issue

Compiled and Issued by: Agrometeorological Unit,

Swaziland Meteorological Service, Ministry of Tourism and Environmental Affairs.

Box 2652, Mbabane, Swaziland.  (+268) 2404 8859 / 2404 6274. Fax: 2404 1530

E-mail: dudu@swazimet.gov.sz

AGROMETEOROLOGICAL BULLETIN

Doc No: TEA 3/3/7/2 F-004

Revision No: 1

Effective Date: 01.07.2017

Page No: 5 of 5

Approved by:

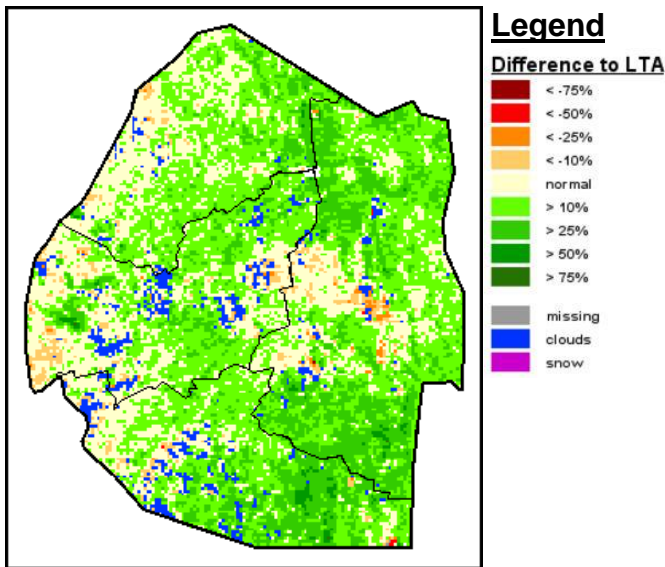


Image 2: Normalized Difference Vegetation Index (NDVI) Anomaly (3rd Dekad November 2024)
Source: FAO-GIEWS

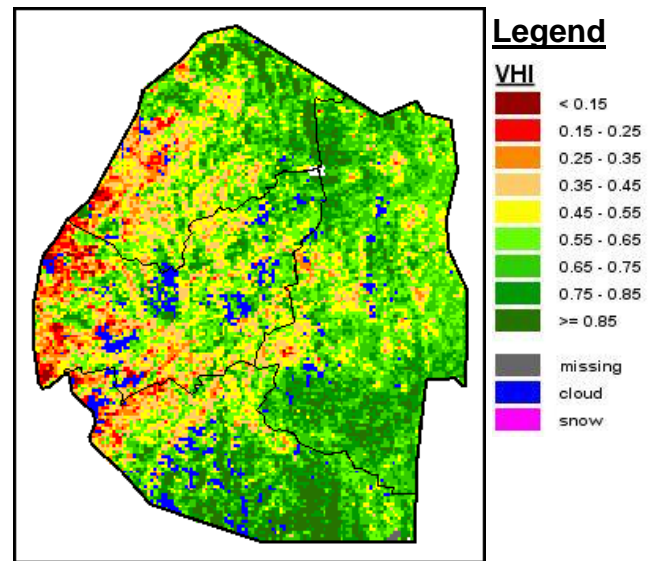


Image 3: Vegetation Health Index (VHI) (3rd Dekad November 2024)
Source: FAO-GIEWS

Compiled and Issued by: Agrometeorological Unit,

Swaziland Meteorological Service, Ministry of Tourism and Environmental Affairs.

Box 2652, Mbabane, Swaziland. ☎ (+268) 2404 8859 / 2404 6274. Fax: 2404 1530

E-mail: dudu@swazimet.gov.sz